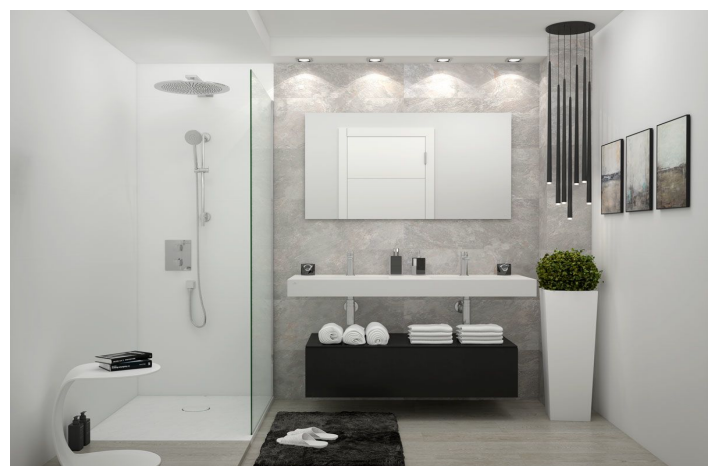
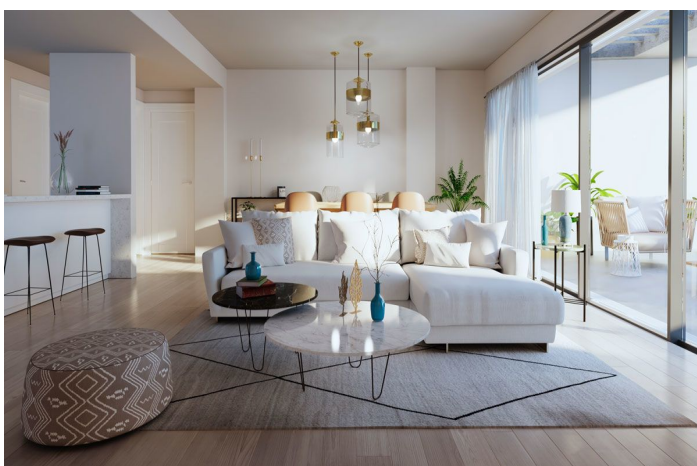




Middle Floor Apartment for sale in La Cala, Mijas

680,000 - 930,000 €

Reference: R3607124 Bedrooms: 1 - 2 Bathrooms: 1 - 2 Build Size: 92m² - 102m² Terrace: 36m² - 83m²





Costa del Sol, La Cala

Stylish residential complex of 82 apartments in Mijas, built across two phases with terraced architecture that blends beautifully with the landscape. Its elevated position offers panoramic sea views, even from the raised ground-floor units, which sit 10 metres above street level. Located between the charm of Mijas Pueblo and the vibrant coastal life of La Cala de Mijas, this development is perfectly positioned for those seeking both tranquillity and easy access to beaches, golf courses, restaurants, and shopping areas. La Cala's promenade, local amenities, and motorway connections are all just minutes away. Homes are designed for comfort and light, with spacious open-plan layouts, floor-to-ceiling windows, generous terraces, and premium finishes throughout. All units include underfloor heating and energy-efficient features. The exclusive 1.5-bedroom layout offers a flexible space ideal as a study, guest room or dressing area. Whether for permanent living or as a holiday base, the project offer elegant design, excellent amenities, and a privileged lifestyle on the Costa del Sol.



Features:

Features

Covered Terrace
Lift
Near Transport
Private Terrace
Storage Room
Fitted Wardrobes
Solarium
WiFi
Gym
Jacuzzi
Basement

Views

Sea Views
Mountain Views
Panoramic Views
Golf Views
Beach

Pool

Communal

Garden

Easy Maintenance

Orientation

South West

Setting

Commercial Area
Close To Golf
Urbanisation
Close To Sea
Close To Shops
Close To Schools

Furniture

Not Furnished

Security

Gated Complex
Entry Phone

Climate Control

Pre Installed A/C
Cold A/C
Hot A/C
U/F Heating

Condition

Excellent
New Construction

Kitchen

Fully Fitted

Parking

Underground
Garage
Covered
Communal
More Than One

Utilities

Electricity
Drinkable Water
Telephone

Category

Beachfront
Golf
Off Plan
With Planning Permission
Contemporary
New Development