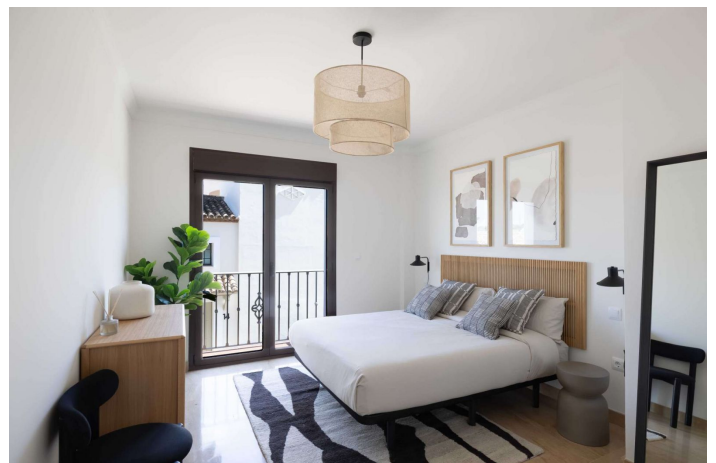




Townhouse for sale in Valle Romano, Estepona

405,000 - 593,750 €

Reference: R5049157 Bedrooms: 3 Bathrooms: 2 Build Size: 230m² - 263m² Terrace: 15m² - 79m²





Costa del Sol, Valle Romano

Welcome to the residential complex in Estepona, your new home on the Costa del Sol. The residential development is an exclusive promotion of 87 single-family homes ready to move into, located in the west area of Estepona, next to the new High Resolution Hospital and right on the golf course. This area, undergoing significant urban expansion, is becoming one of the most prestigious and promising residential destinations on the Costa del Sol. The homes, spread over two floors plus a basement, have three bedrooms and two bathrooms, large private terraces, and in some cases, a solarium with stunning views of the sea and the golf course. Designed in a modern style inspired by Mediterranean architecture, they offer bright rooms, marble floors, double-glazed windows, electric blinds, and a whirlpool bathtub designed for your wellbeing and comfort. The residential complex includes exclusive common areas such as indoor and outdoor swimming pools, a spa and gym, as well as redesigned gardens that bring harmony and wellbeing. The entire development is being completely renovated, both inside and out, to offer a high-quality, functional, and elegant environment. Thanks to its strategic location, surrounded by nature and perfectly connected to Estepona, Marbella, Sotogrande, and the airports of Málaga and Gibraltar, this development represents a unique investment and lifestyle opportunity on the Costa del Sol. Immediate delivery.



Features:

Features

Covered Terrace
Private Terrace
Storage Room
Marble Flooring
Double Glazing
Fitted Wardrobes
Gym
Basement

Views

Sea Views
Panoramic Views
Country Views
Golf Views

Pool

Communal
Indoor

Security

Gated Complex
Entry Phone

Orientation

East
South East

Setting

Close To Golf
Close To Sea
Close To Shops
Close To Town
Close To Schools
Frontline Golf

Kitchen

Kitchen-Lounge

Parking

Underground
Garage
Private

Climate Control

Pre Installed A/C

Condition

New Construction

Garden

Communal

Category

New Development