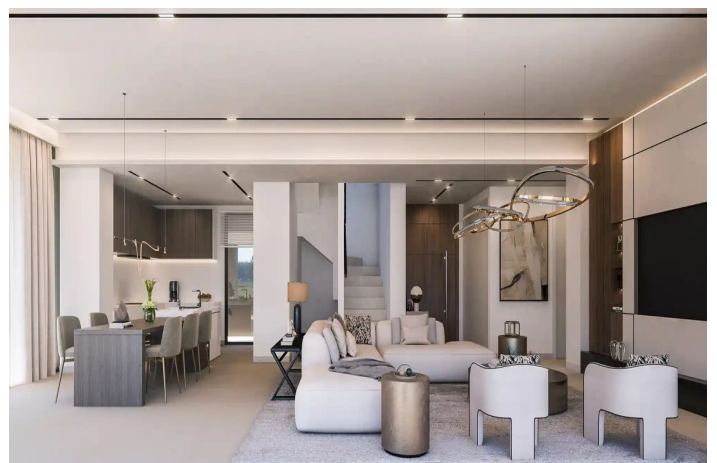
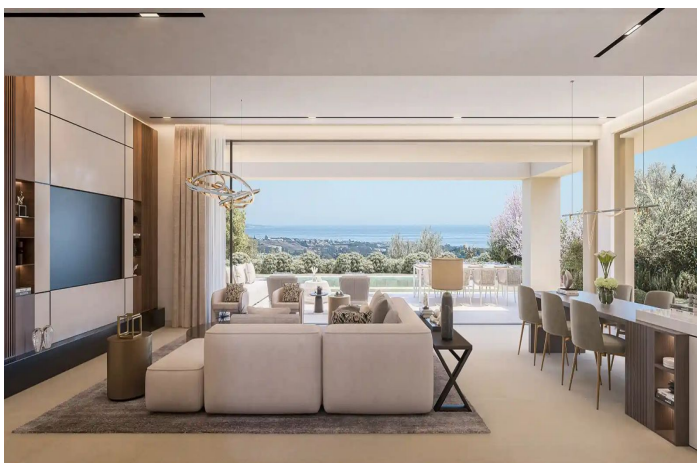




## Detached Villa for sale in Benahavís, Benahavís

2,200,000 -  
2,750,000 €

Reference: R5015632 Bedrooms: 3 - 5 Bathrooms: 2 - 4 Plot Size: 584m<sup>2</sup> - 632m<sup>2</sup> Build Size: 160m<sup>2</sup> - 371m<sup>2</sup>  
Terrace: 55m<sup>2</sup> - 127m<sup>2</sup>





## Costa del Sol, Benahavís

This residential is a gated, villa community nestled in the hills located in lower Benahavis. Sitting within a triangle between Marbella, Estepona and the mountain village of Benahavis this unique development offers tranquility, stunning panoramic views and embraces the natural organic environment. A unique project that offers a “lock and leave” villa concept with a community fee including 24 hour security, maintenance of the stunning grounds that house an abundance of Olive trees, exclusive use of the Club House including heated indoor pool, full equipped gym, office space and Sauna, and full maintenance of your private garden and pool. Launched in 2021 the contemporary designed villas embrace the natural elements, designed to maximise the stunning views and with 7 villa designs to suit all needs, this development continues to be in high demand. Built to the high standard, these villas blend contemporary open plan designed properties with seamless living enabling full enjoyment of the natural surrounds and stunning views offered. This brand-new development, consists of modern and contemporary properties with organic and natural elements in keeping with the surroundings. Each villa comes with a verdant Mediterranean garden and a private pool. The development is located in the heart of Benahavís, only a few minutes away from Marbella and Estepona. It is one of the most exciting luxury residential project in many years. All villas comes with a well-designed and open-plan concept including high ceilings and windows that allows the light to flood into the home.



## Features:

### Features

Private Terrace  
Ensuite Bathroom  
Double Glazing  
Fitted Wardrobes  
Gym  
Sauna  
Utility Room  
Basement

### Setting

Close To Golf  
Close To Town

### Kitchen

Fully Fitted  
Kitchen-Lounge

### Parking

Private  
Open  
EV charge point

### Climate Control

Cold A/C  
Hot A/C  
U/F Heating  
U/F/H Bathrooms

### Condition

New Construction

### Garden

Communal  
Private Garden  
Landscaped

### Category

New Development

### Views

Sea Views  
Mountain Views  
Panoramic Views  
Pool Views

### Pool

Communal  
Heated  
Indoor  
Private

### Security

Gated Complex  
24 Hour Security