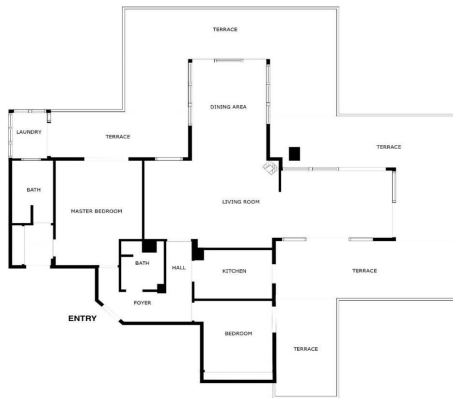




## Penthouse for sale in Benalmadena Costa, Benalmádena

610,000 €

Reference: R4777045 Bedrooms: 2 Bathrooms: 2 Plot Size: 272m<sup>2</sup> Build Size: 135m<sup>2</sup> Terrace: 137m<sup>2</sup>



SIZES ARE APPROXIMATE, ACTUAL MAY VARY.





## Costa del Sol, Benalmadena Costa

Welcome to your dream home in the prestigious area of Higueron! This exquisite 2-bedroom penthouse offers unparalleled luxury and comfort with breathtaking sea views and a host of modern amenities. The Reserva del Higuerón Housing Estate is an idyllic place offering the best views, an architectural style that adapts to the land's natural features and a wide variety of services. The entire area is granted safety, exclusiveness and wellbeing, as well as the satisfaction of the highest demands with every development. Key Features: Prime Location: Situated in the sought after area of Higueron, you are conveniently close to high-end restaurants, well equipped fitness center, tennis court and top-rated schools and the Higueron 5 stars hotel Enjoy unparalleled privacy in the community's highest penthouse, offering complete peace with no neighbouring units overlooking your space. Panoramic Sea Views: Revel in the serene and picturesque sea views right from your home, providing a constant reminder of the beauty that surrounds you. Tropical Gardens: The complex features beautifully landscaped tropical gardens and 2 pools, offering a peaceful and lush environment to unwind and enjoy nature. Modern Amenities: Benefit from the exclusive amenities within the complex, including 2 swimming pools, spa, tennis courts, and a well-equipped fitness center. Additional Features: Fireplace Two spacious bedrooms with direct access to the terrace EASY Possibility of converting it into a 3 bedroom 5 electric awnings Higuerón bus that takes you to the beach in Carvajal and shopping area including restaurants, pharmacy and Carrefour supermarket Laundry room Secure underground parking and storage room. Only 20 minutes away from the airport! 135m2 Built + 138m2 Terrace



## Features:

### Features

Lift  
Near Transport  
Private Terrace  
Satellite TV  
Storage Room  
Ensuite Bathroom  
Marble Flooring  
Double Glazing  
Fitted Wardrobes  
WiFi  
Courtesy Bus  
Basement

### Views

Sea Views  
Mountain Views  
Panoramic Views  
Garden Views

### Pool

Communal  
Children`s Pool

### Garden

Communal

### Utilities

Electricity  
Drinkable Water

### CO2 Emission Rating

E

### Orientation

East  
South  
West

### Setting

Beachside  
Close To Golf  
Close To Port  
Urbanisation  
Close To Sea  
Close To Town  
Close To Schools

### Furniture

Part Furnished

### Security

Gated Complex  
Entry Phone

### Category

Holiday Homes  
Investment  
Luxury

### Climate Control

Air Conditioning  
Cold A/C  
Hot A/C  
Fireplace  
U/F/H Bathrooms

### Condition

Good

### Kitchen

Fully Fitted

### Parking

Underground  
Garage  
Private  
Covered

### Energy Rating

E