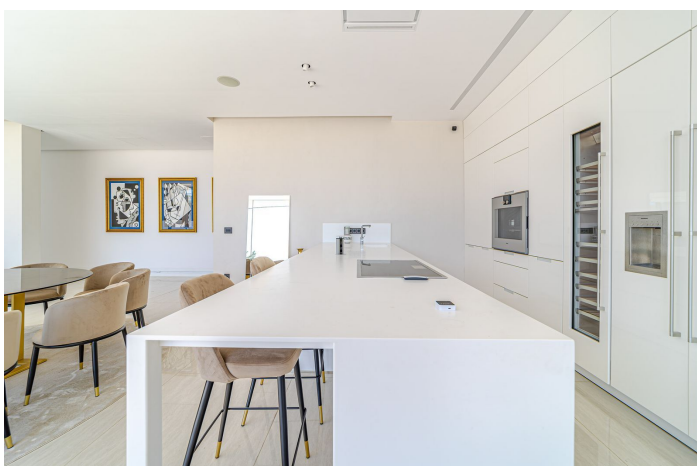
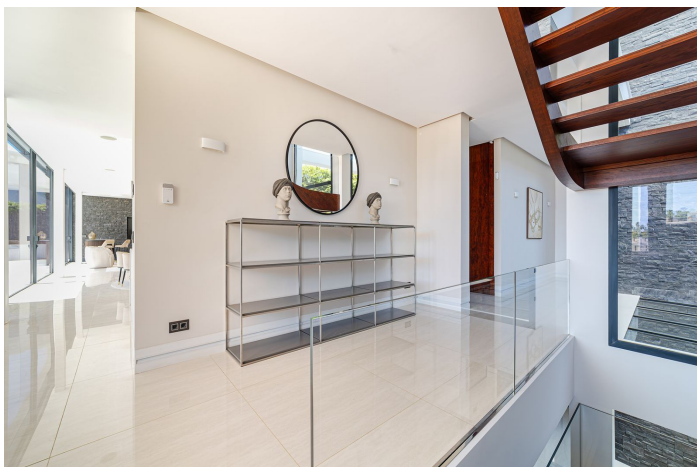




Detached Villa for sale in Nueva Andalucía, Marbella

4,700,000 €

Reference: R4830289 Bedrooms: 6 Bathrooms: 6 Plot Size: 1,392m² Build Size: 643m² Terrace: 230m²





Costa del Sol, Nueva Andalucía

Discover the epitome of luxury living in this breathtaking villa, perfectly positioned in the heart of Nueva Andalucía, one of the region's most scenic locales. Just minutes from the prestigious Los Naranjos Golf Course, Las Brisas, Aloha and an array of all the amenities, including luxury Puerto Banus. This property promises a lifestyle of convenience and elegance. Spanning an impressive 643 square meters across three levels, and set on a spacious 1,392 square meter plot, this modern, light-filled villa exemplifies sophisticated design, blending contemporary architecture with top-tier amenities. Crafted for ultimate comfort and ease, the villa boasts a state-of-the-art smart home system and an open-concept layout that seamlessly connects indoor and outdoor living spaces. On the main floor, a large living and dining area flows effortlessly into a designer kitchen, opening onto a stunning terrace and pool area—perfect for relaxation and entertaining. Two en-suite bedrooms with private terraces offer tranquil retreats, while a spacious walk-in closet and functional laundry room add to the home's convenience. Upstairs, the first floor is a sanctuary of privacy, housing three more en-suite bedrooms, each with built-in wardrobes. The master suite is a true standout, offering luxurious finishes and panoramic views of the iconic La Concha mountain range. The lower level of the home features a guest suite with its own kitchen, along with a closed garage accommodating 2-3 vehicles. For entertainment, a chic home cinema invites you to enjoy intimate movie nights in style. Meticulously maintained and offering year-round comfort, this villa is the perfect blend of luxury, style, and functionality.



Features:

Features

Covered Terrace
Lift
Near Transport
Private Terrace
Storage Room
Ensuite Bathroom
Double Glazing
Fitted Wardrobes
Utility Room
Domotics
Basement

Views

Mountain Views
Panoramic Views

Pool

Private

Garden

Private Garden

Category

Holiday Homes
Investment
Golf
Luxury
Resale

Orientation

South East

Setting

Close To Golf
Close To Port
Close To Shops
Close To Town
Close To Schools

Furniture

Fully Furnished

Security

24 Hour Security
Alarm System

Climate Control

Air Conditioning
Hot A/C

Condition

Excellent
New Construction

Kitchen

Fully Fitted

Parking

Underground
Garage
Private
Covered